



EfficienSea2 Conference:
**GETTING CONNECTED
TO THE FUTURE**

8-9 November 2016



This project has received funding from The European Union's Horizon 2020 Research and Innovation Programme under Grant Agreement no. 636329



VTS and SRS reporting BSR

Give the feeling of one area to the mariner

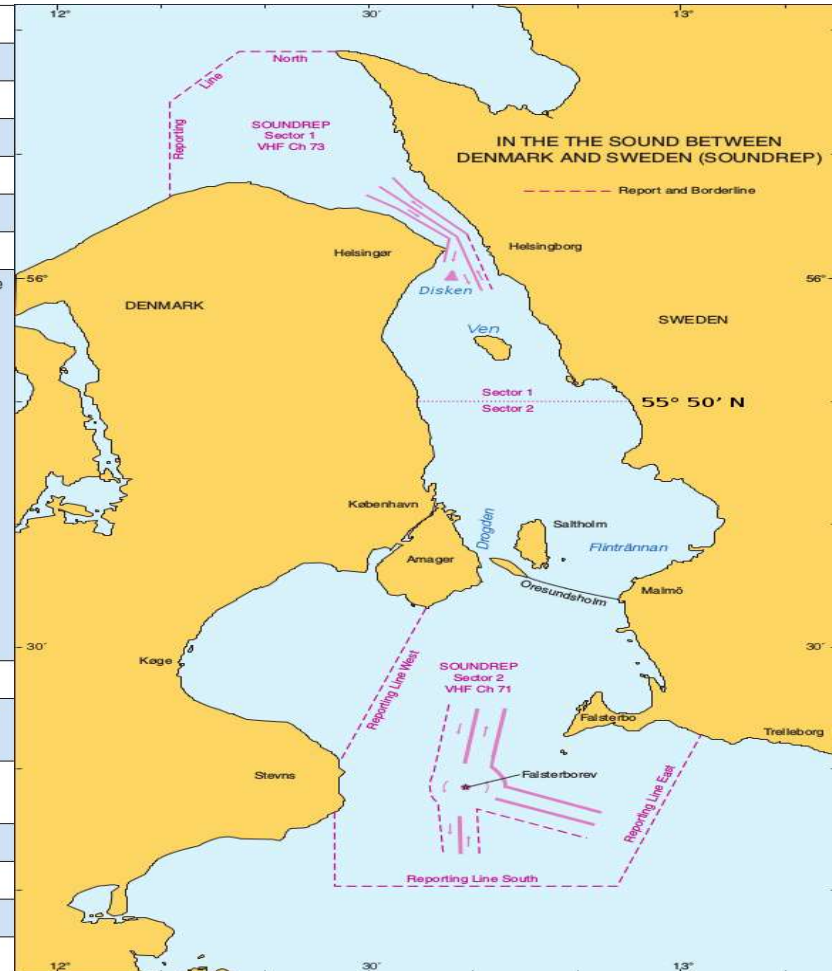
09-11-2016

Fredrik Karlsson, Coordinator Innovation & Development, SMA



...Ship Reporting Scheme (SRS Reporting)

ID	Function	Information required
A	Vessel	Vessel name and call sign
B	Date and time	ETA to point of entry
C	Position	Point of entry (sector 1 or sector 2)
E	Course	A 3-digit group
F	Speed	A 3-digit group
I	Destination and ETA	The name of next port of call given in UN LOCODE and ETA
L	Route information	<p>Description of the intended route. Vessels navigating in The Sound have options on deciding route in the following areas:</p> <ul style="list-style-type: none"> • Disken Shoal • Ven Island • Drogden Channel • Flintrännen channel <p>Route information should be coded using the following designators:</p> <ul style="list-style-type: none"> • DW - Disken, West of • DE - Disken, East of • VW - Ven, West of • VE - Ven, East of • D - Drogden • F - Flintrännen
O	Maximum draught	Maximum draught in metres
P	Cargo onboard	Type of cargo and if applicable, IMO classes and quantity of each class for dangerous goods
Q	Defects	Details of defects and deficiencies affecting normal navigation or manoeuvrability
T	Vessel's representative	Name and telephone number to Designated Person Ashore
U	Air Draught	Ship's maximum height above sea level
W	POB	Total number of persons on board
X	Miscellaneous	Type and estimated quantity of bunker fuel (for vessels over 1000 GT)





SRS Reporting, small part but good showcase

...course SRS reporting is a part of...

- 215 reporting requirements Helsinki – Rotterdam *wp5, BIMCO*
- Administration bruden *– BIMCO, EMSA, et al. (Not only onboard!!!)*
- *IMO designators such as Vessel name and call sign, POB, Designated person on shore and so on.*
- Data → Information → Meaning *– Leapcraft*

BSR HWG (Harmonisation Working Group) started 2007... Most of the data are probably somewhere, EMSA...

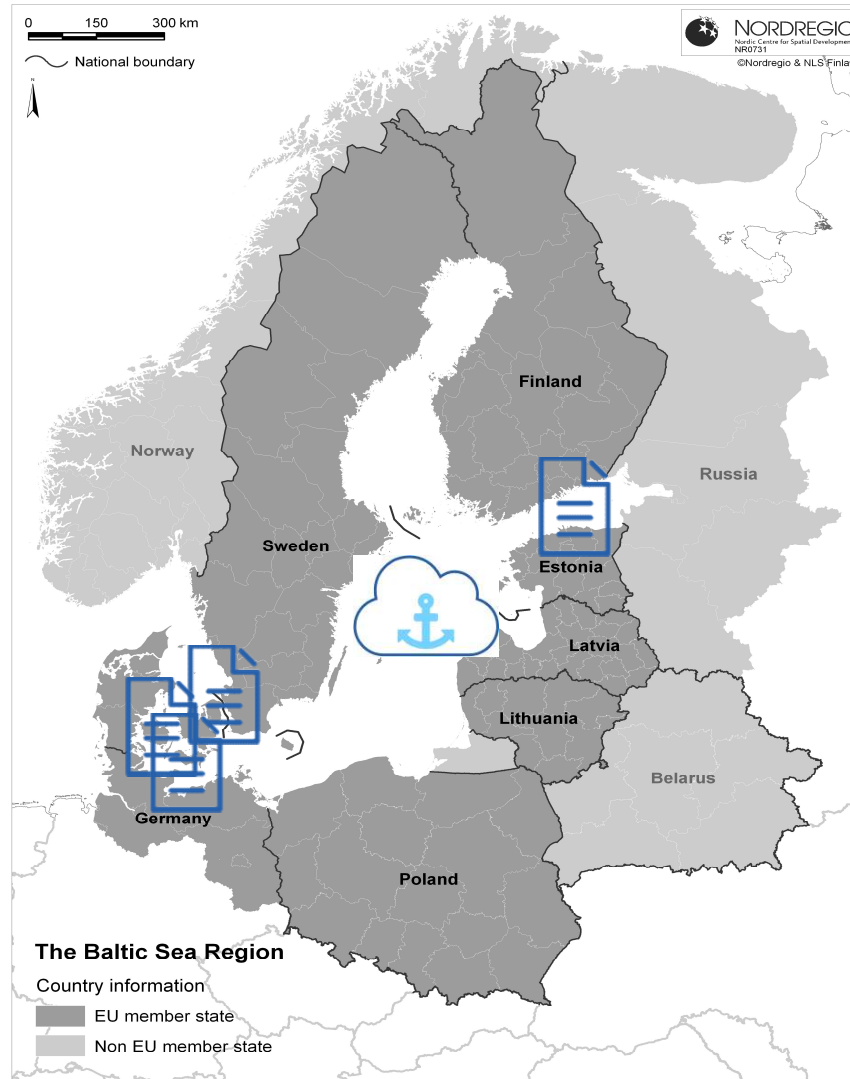
Provide showcase how MC could help in SRS reporting



- SOUNDREP
- BELTREP
- GOFREP
- Kiel - Canal



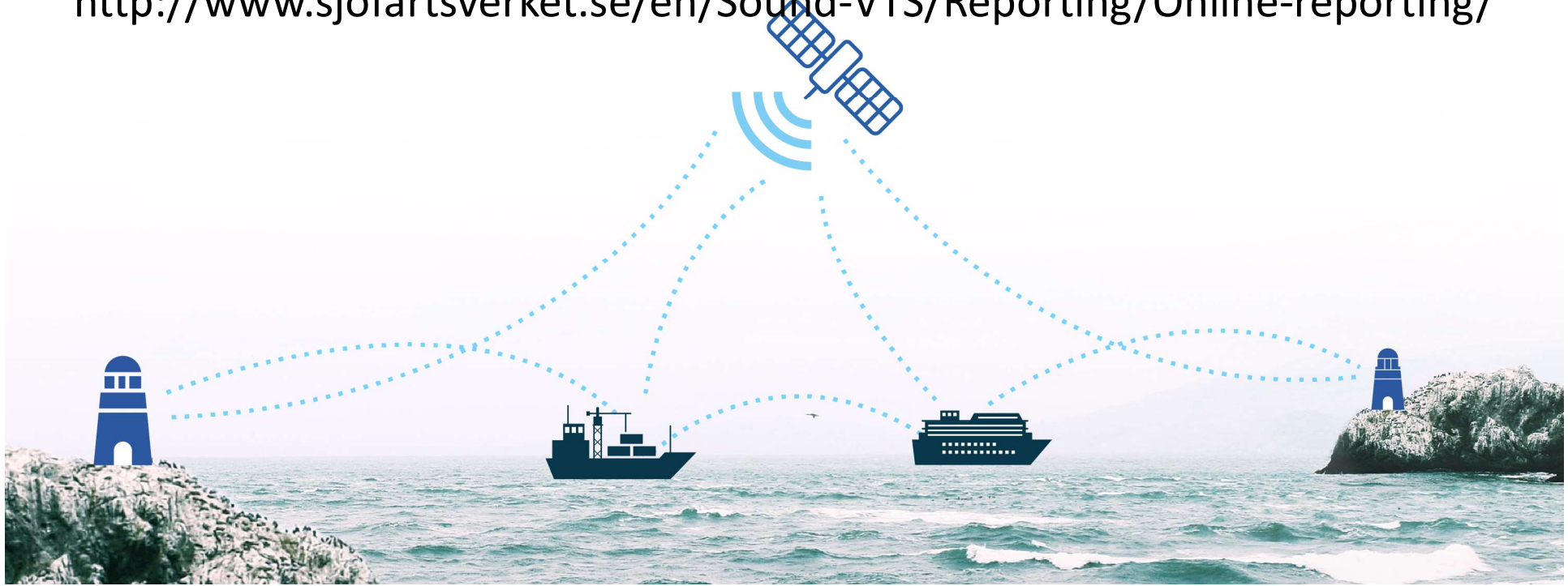
Maritime Cloud Portal





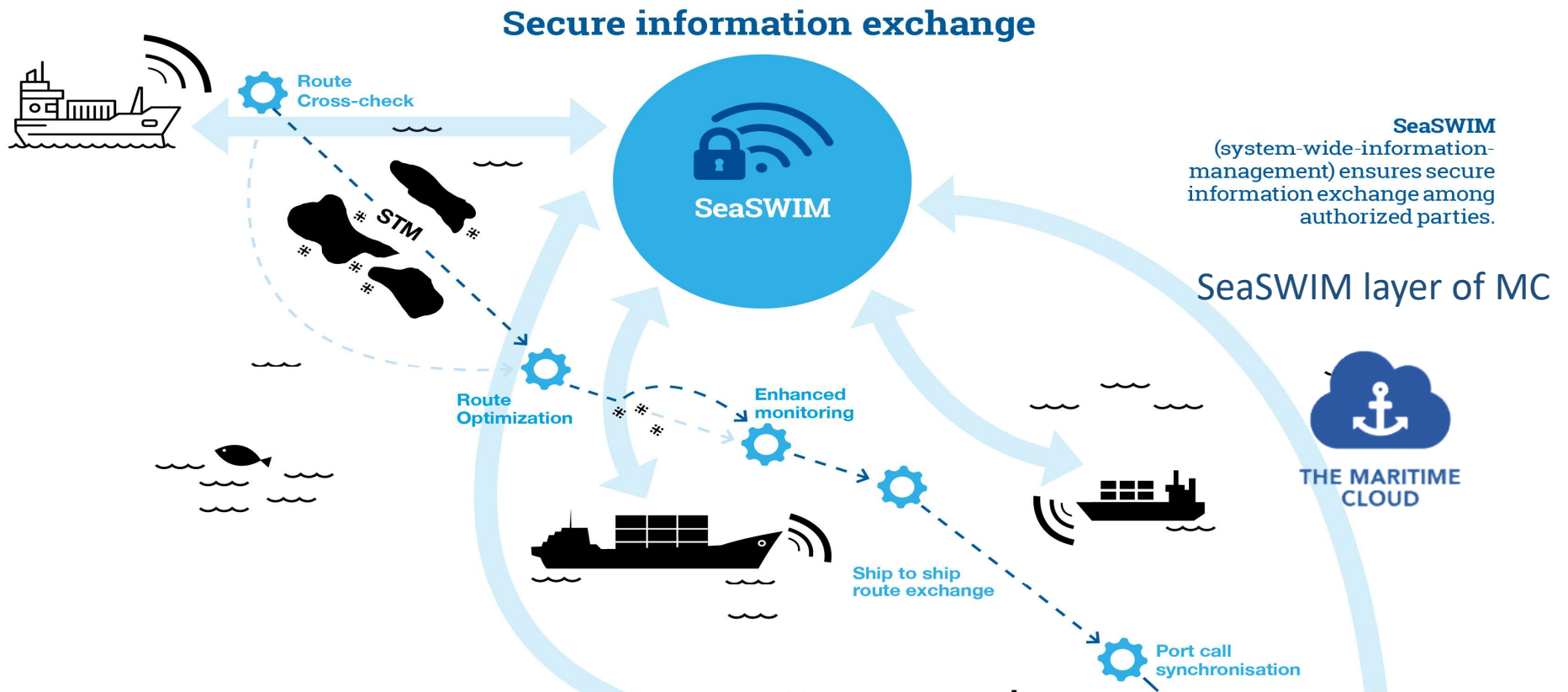
Communication Channels

<http://www.sjofartsverket.se/en/Sound-VTS/Reporting/Online-reporting/>





Future... SRS reporting connected to STM/ENSI Voyage Plans world wide via MC





Need to know → Need to share

