



EFFICIENSEA

2.0 GETTING CONNECTED

EfficienSea2 Conference:

GETTING CONNECTED TO THE FUTURE

8-9 November 2016



This project has received funding from The European Union's Horizon 2020 Research and Innovation Programme under Grant Agreement no. 636329



EFFICIENSEA

2.0 GETTING CONNECTED

Shallow Water Route Optimisation

SSPA Sweden AB

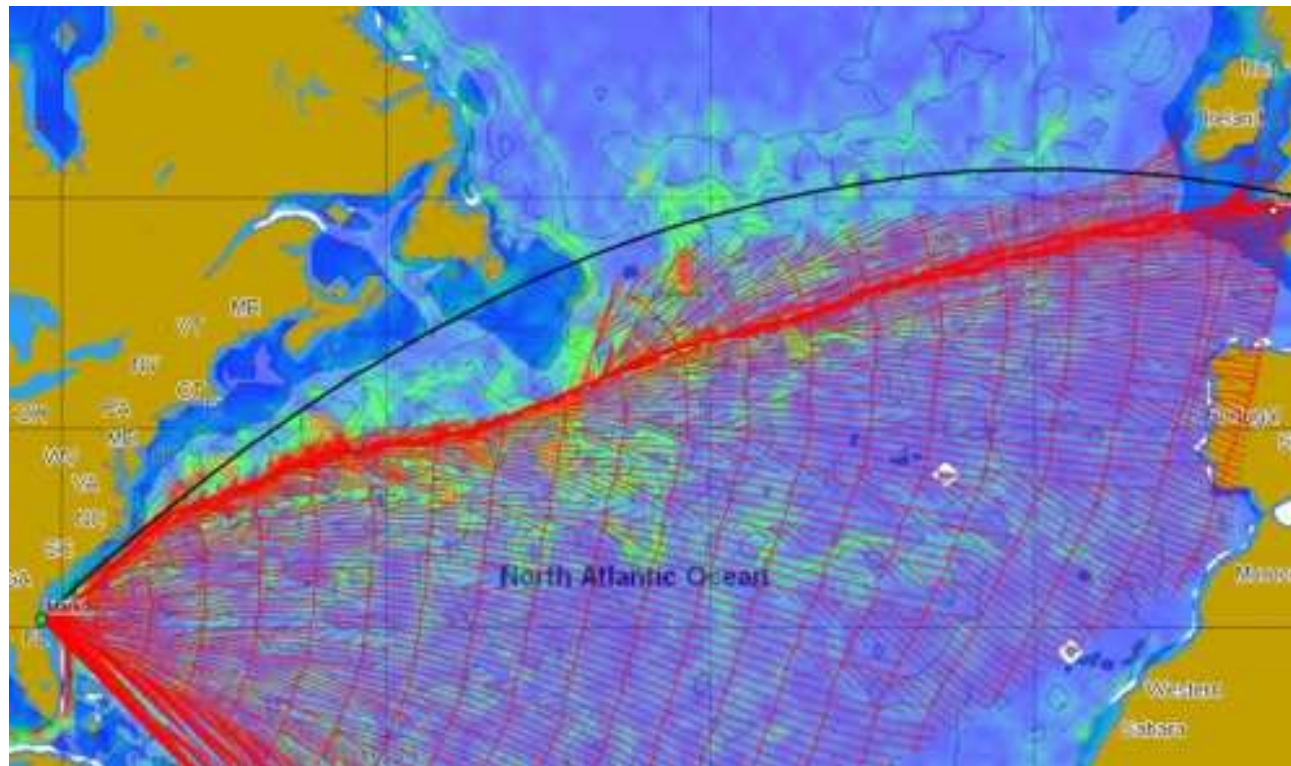
04/11/2016

Lars Markström / Henrik Holm



Your Maritime
Solution Partner

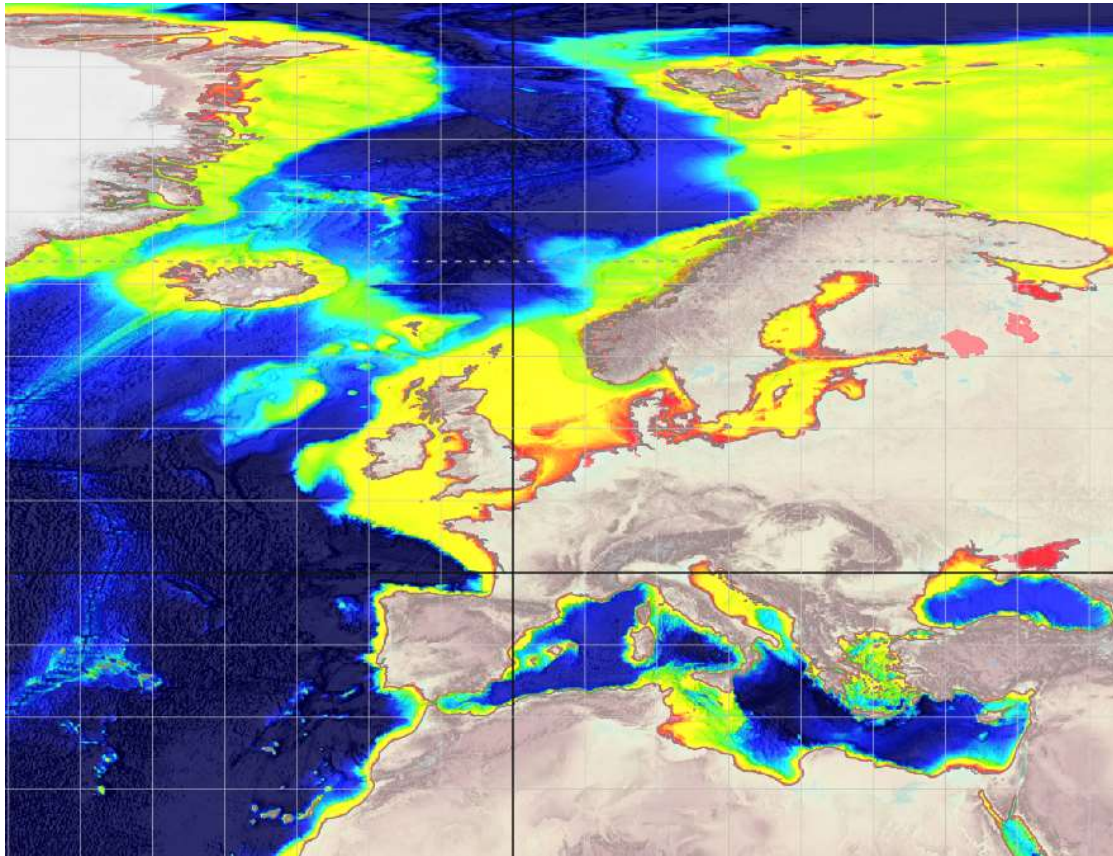
Transocean route optimisation



Several suppliers available on the market today. Established methodologies on the deep oceans.



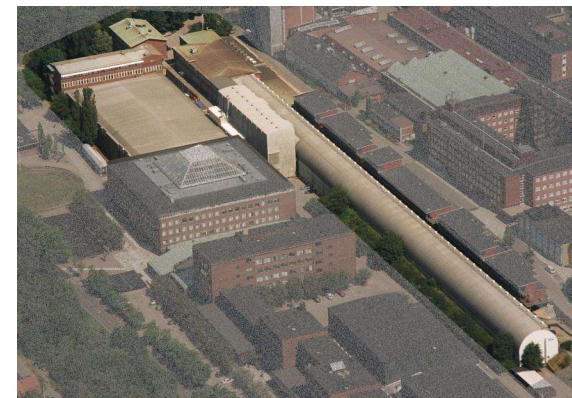
Your Maritime
Solution Partner



**Route
optimisation
performance in
the shallow
waters common
in Europe?**



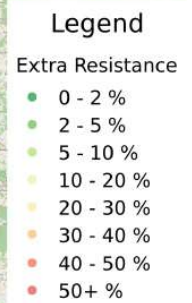
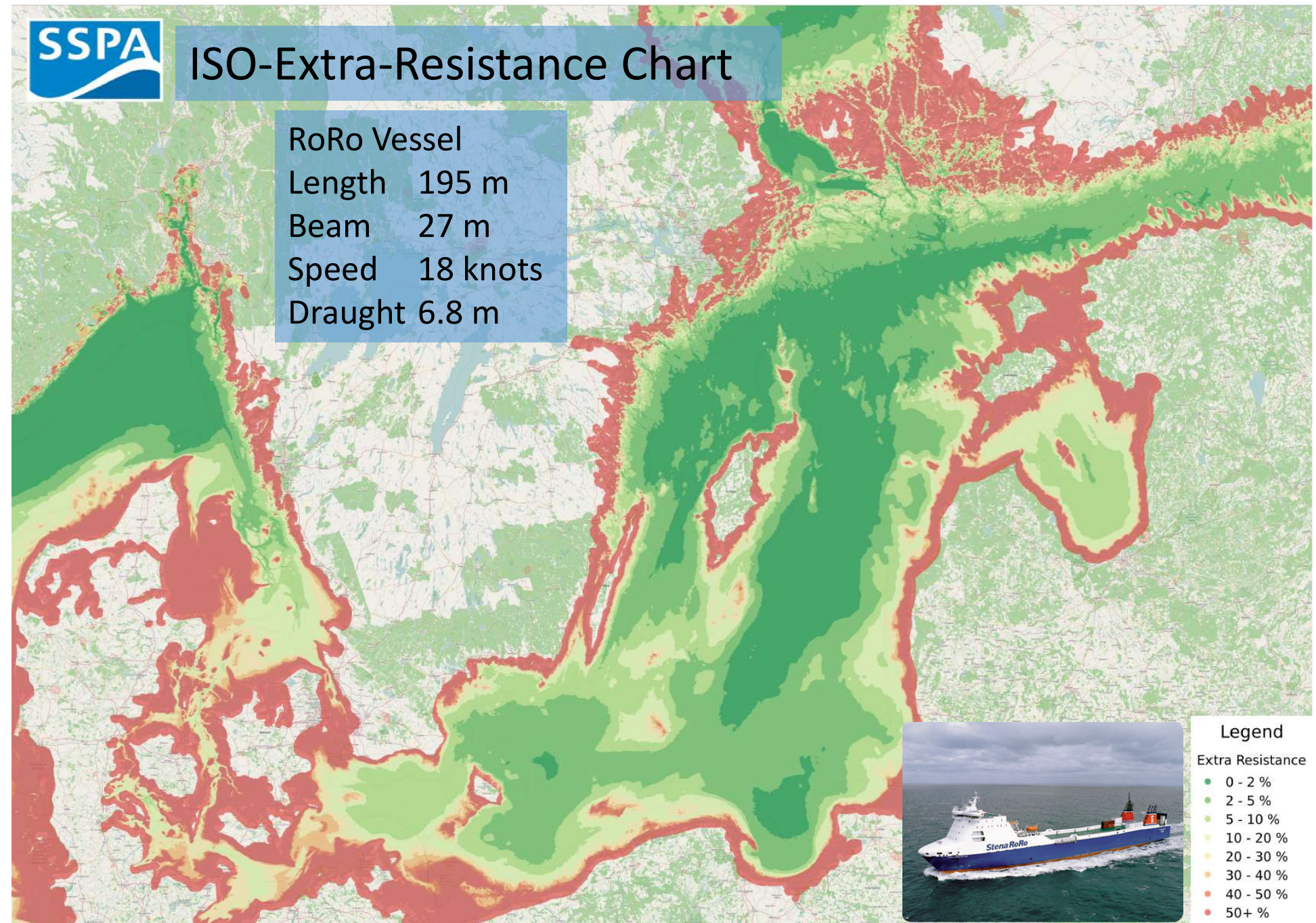
SSPA Study on Shallow Water Effects





ISO-Extra-Resistance Chart

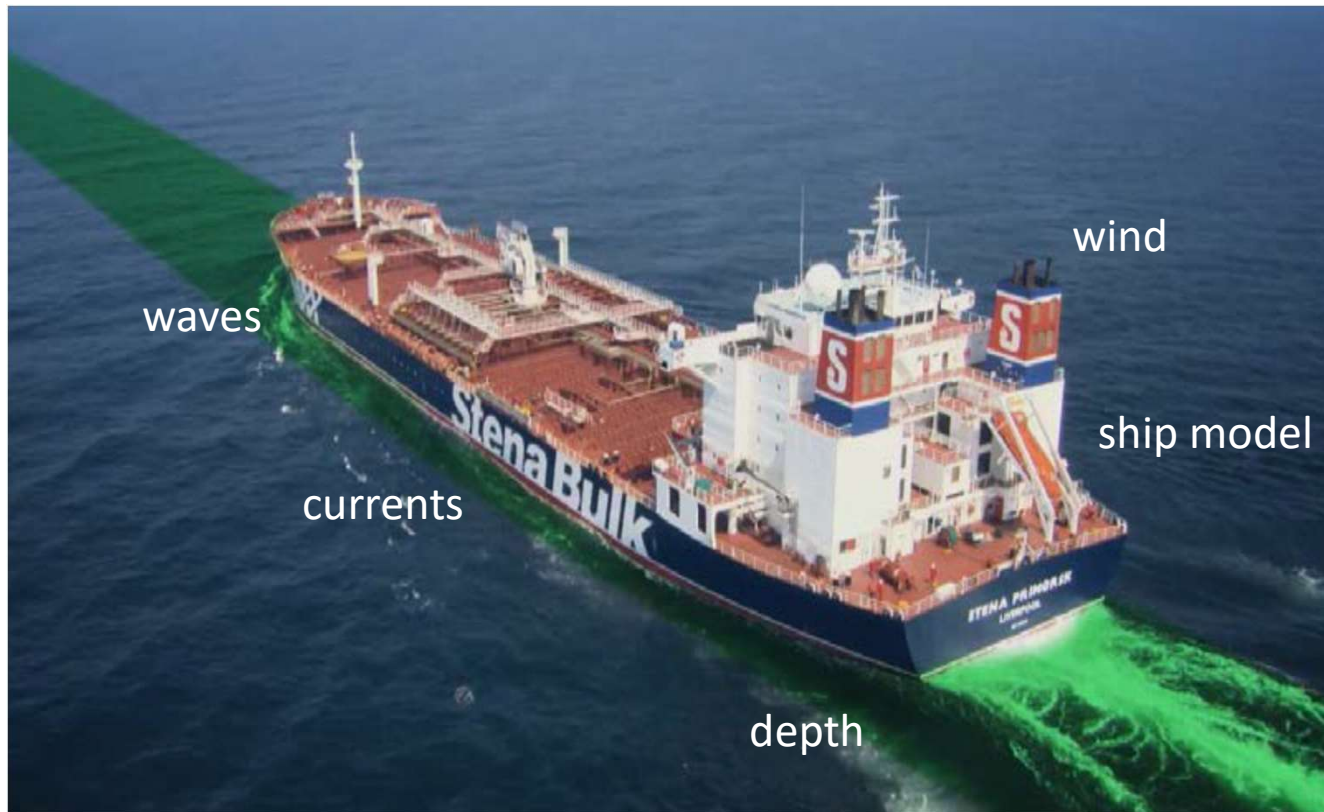
RoRo Vessel
Length 195 m
Beam 27 m
Speed 18 knots
Draught 6.8 m





Your Maritime
Solution Partner

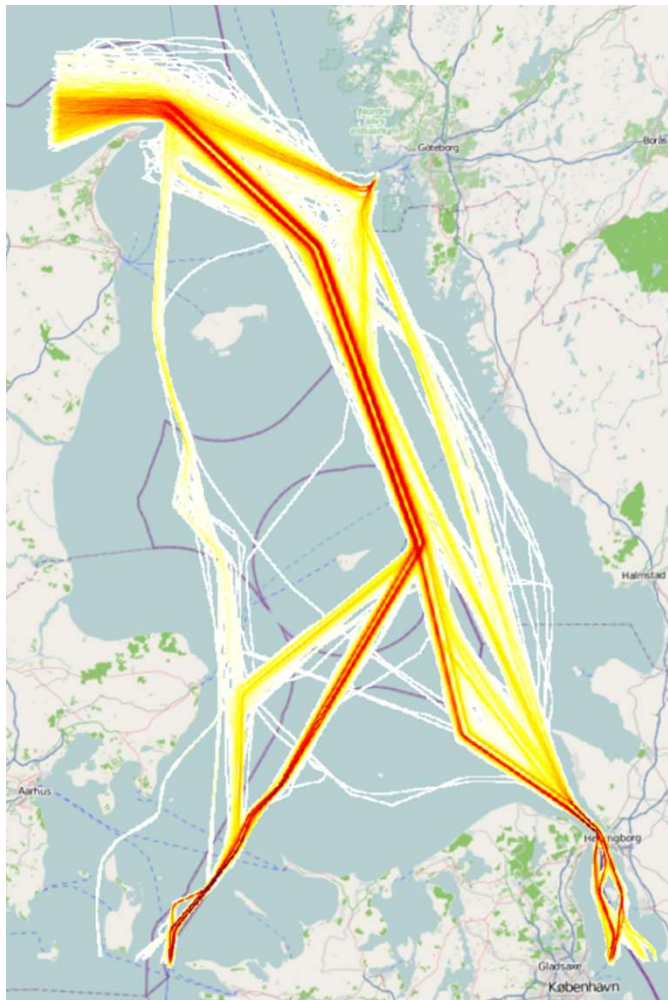
SSPA Route Optimisation Service



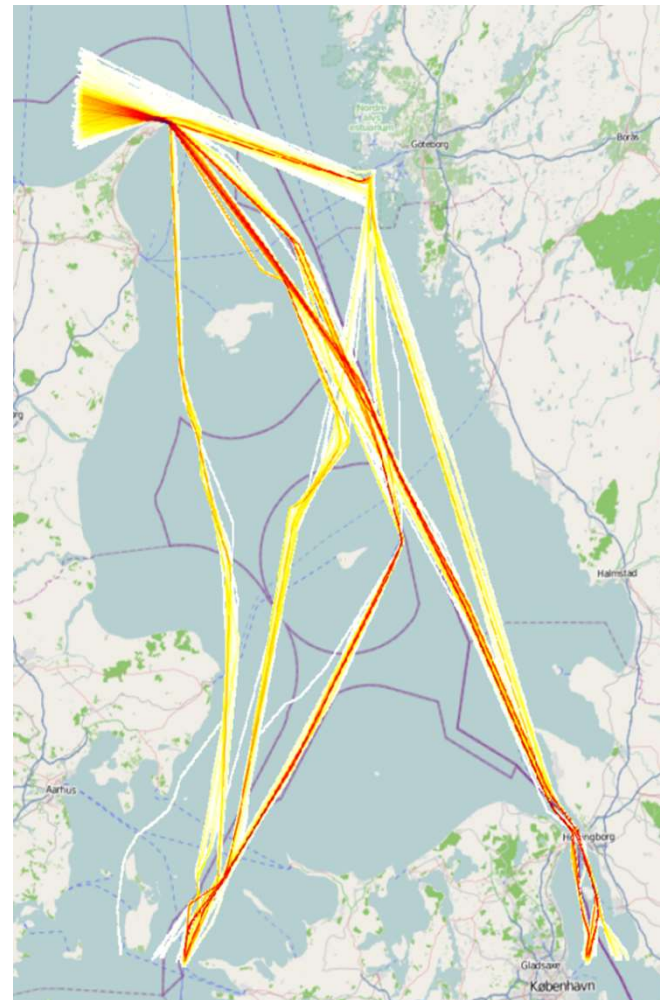
**Waypoints – free or
locked**
**Specific ETA or
service speed**
Speed management
UKC
RTZ, MC, BW



AIS tracks



Optimised routes



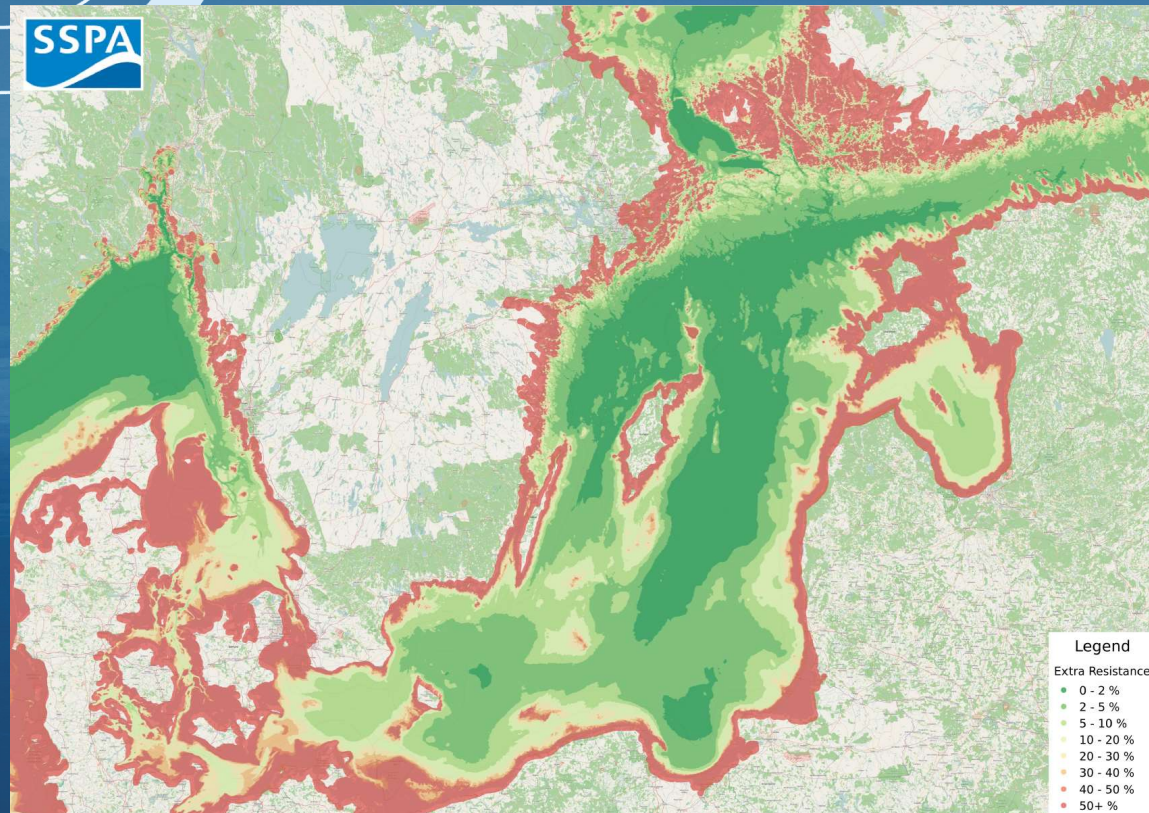
-12%

EFFICIENSEA

2.0 GETTING CONNECTED



Thank you for your attention!



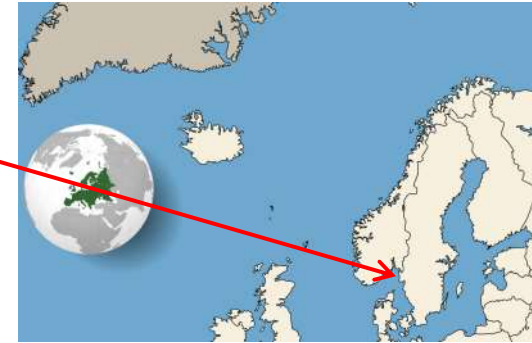
04/11/2016

Lars Markström / Henrik Holm



Your Maritime
Solution Partner

SSPA Sweden AB.



**TOWING
TANK**



**SEAMAN
SIMULATION**



**MARITIME DYNAMICS
LABORATORY**



**CAVITATION
TUNNEL**

