



EFFICIENSEA
2.0 GETTING CONNECTED

ENSI service for route exchange

Enhanced Navigation Support Information

09-11-2016

Mikko Klang, Finnish Transport Agency



Communication solution

Ship client

Server

VTS integration



Mariners



VTS



It makes possible to

- Send reports easily
- Boost it with route plan
- Get a cross-check
- Single Window approach



Mariners



It makes possible to

- Send reports easily
- Boost it with route plan
- Get a cross-check
- Single Window approach

A screenshot of a software window titled "Send to VTS". The window has a standard Windows-style title bar with a close button. Below the title bar, there are four tabs: "1. Voyage", "2. Cargo", "3. Pilotage", and "4. Misc". The "1. Voyage" tab is currently selected. The form contains several input fields: "Draught [m]:" with the value "7.4", "Deficiencies:" with "NIL", "Pollution:" with "NIL", and "Persons Onboard:" with "22". Below these is a larger text area labeled "Extra Information:" containing the text "Proceeding to the outer anchorage for orders". At the bottom of the window, there are three buttons: "Cancel", "Previous", and "Submit".



It makes possible to

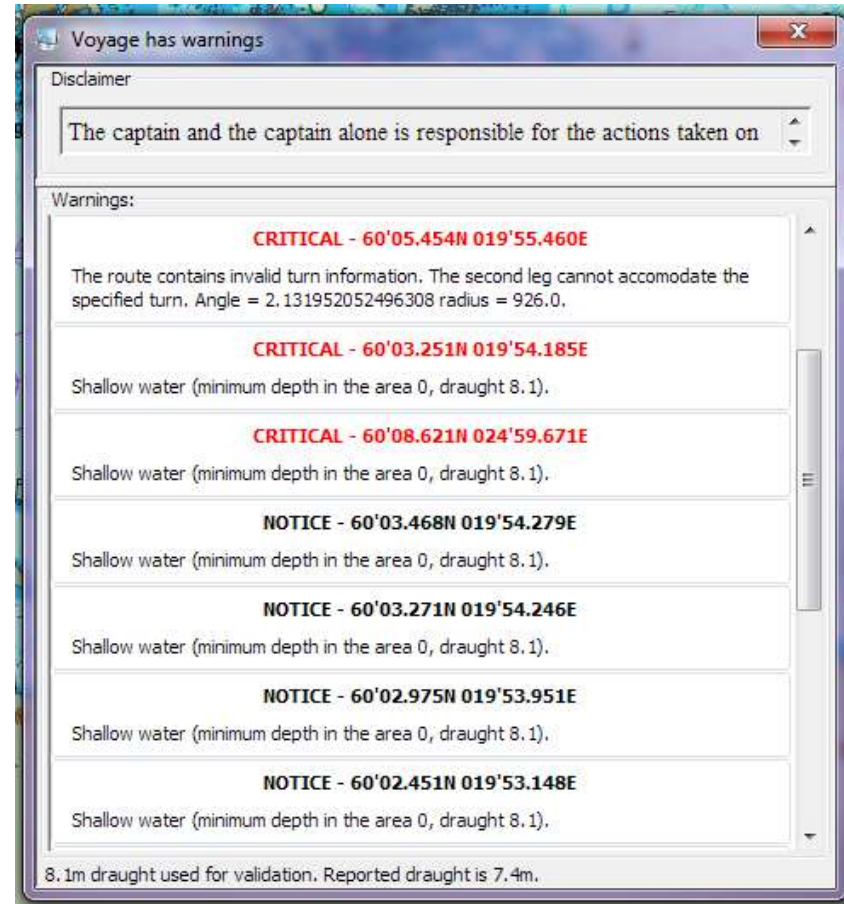
- Send reports easily
- Boost it with route plan
- Get a cross-check
- Single Window approach





It makes possible to

- Send reports easily
- Boost it with route plan
- **Get a cross-check**
- Single Window approach





It makes possible to

- Send reports easily
- Boost it with route plan
- **Get a cross-check**
- Single Window approach





It makes possible to

- Send reports easily
- Boost it with route plan
- Get a cross-check
- Single Window approach





It makes possible to

- Receive reports into the system
- Choose the timing
- Assess route plan visually
- Follow ship's course automatically



VTS



It makes possible to

- Receive reports into the system
- Choose the timing
- Assess route plan visually
- Follow ship's course automatically

1. Cargo	2. Misc
<input type="checkbox"/> 1 - Explosives	Tonnage: <input type="text"/>
<input type="checkbox"/> 2 - Gases	Tonnage: <input type="text"/>
<input checked="" type="checkbox"/> 3 - Flammable liquids	Tonnage: <input type="text" value="23800"/>
<input type="checkbox"/> 4 - Flammable solids	Tonnage: <input type="text"/>
<input type="checkbox"/> 5 - Oxidizing substances & organic peroxides	Tonnage: <input type="text"/>
<input type="checkbox"/> 6 - Toxic & infectious substances	Tonnage: <input type="text"/>
<input checked="" type="checkbox"/> 7 - Radioactive material	Tonnage: <input type="text" value="6"/>
<input type="checkbox"/> 8 - Corrosive substances	Tonnage: <input type="text"/>
<input type="checkbox"/> 9 - Misc. dangerous goods	Tonnage: <input type="text"/>
Bunker	Tonnage: <input type="text" value="12600"/>
Total Unspecified Tonnage	Tonnage: <input type="text"/>



It makes possible to

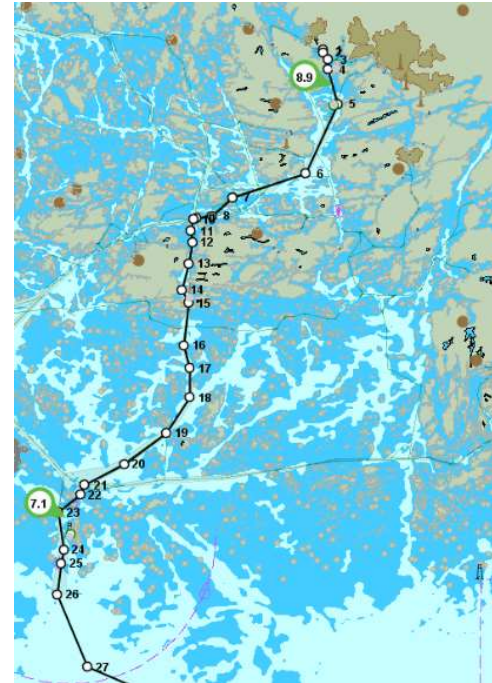
- Receive reports into the system
- Choose the timing
- Assess route plan visually
- Follow ship's course automatically





It makes possible to

- Receive reports into the system
- Choose the timing
- **Assess route plan visually**
- Follow ship's course automatically



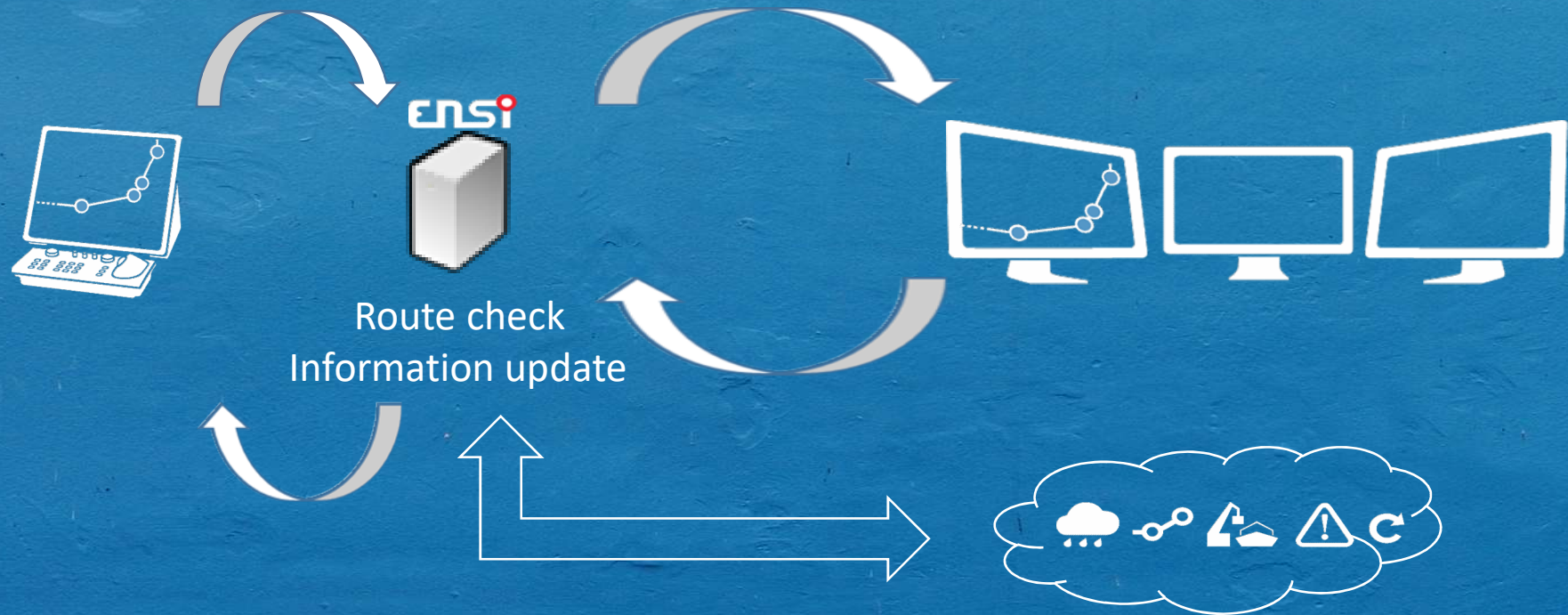


It makes possible to

- Receive reports into the system
- Choose the timing
- Assess route plan visually
- Follow ship's course automatically



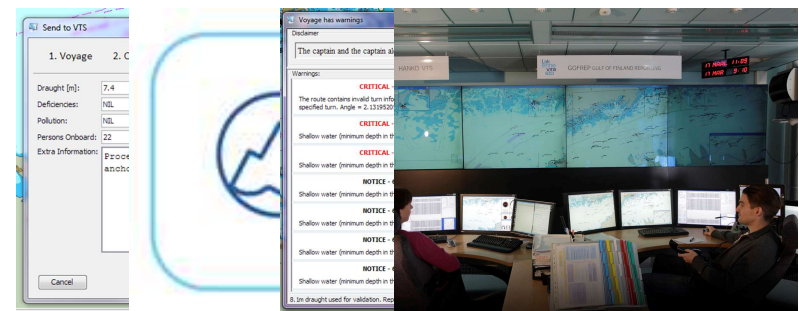
What?

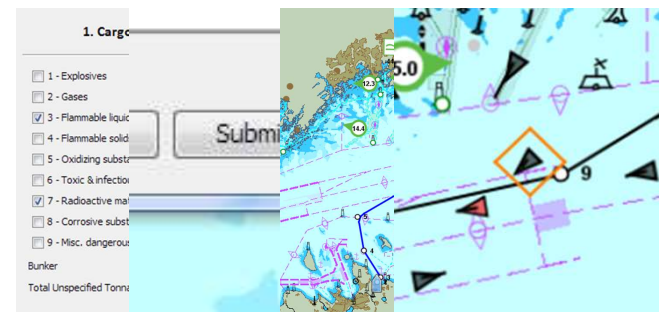




Benefits

- Simple reporting = Workload, time, pressure
- Information updates = Workload, time, safety, pressure
- Cross-checks = Safety, pressure
- Superb monitoring = Safety





Benefits

- Clear reports = Workload, timing, pressure
- Simple forwarding = Workload, error margin
- Outstanding awareness = Pressure, safety
- Monitoring support = Pressure, workload, safety

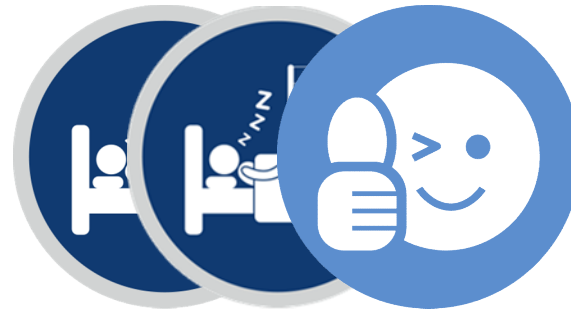


Benefits

- Cross-checks
- Superb monitoring
- Crew workload



Ship owner



=

Safety of business

=

Safety of business

=

Safety of business, image



Cargo owner



Benefits

- Advanced monitoring = Safety of business



Benefits

- Advanced monitoring



Broker

=



Sales argument





Challenges?





Thank You!



Liikennevirasto

Finnish Transport Agency

<https://ensi.fta.fi>